

# DO-IT-YOURSELF OUTBOARD-PROPELLED CANAL-CRUISERS

Build it yourself for the flaneur-afloat



## ESCARGOT III

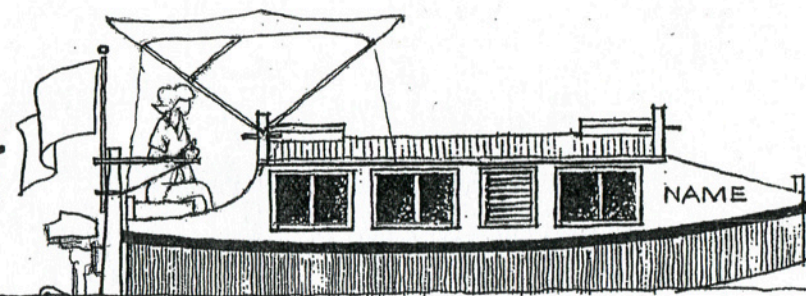
ESCARGOT is one of a series of small boat designs using simple box-like plywood construction with traditional work-boat character for the advanced amateur builder to use on sheltered inland waters.

Accommodated under 4'-6" sitting headroom are two berths forward, with deck-access hatch over; followed by toilet and hanging space and then a "salon" with table seating and a food-preparation counter. (The table lowers to provide a third berth). Aft of this is an open cockpit with seats on storage boxes.

A transom-mounted outboard motor of two-to-five hp provides a relaxed cruising speed of four-to-five mph.

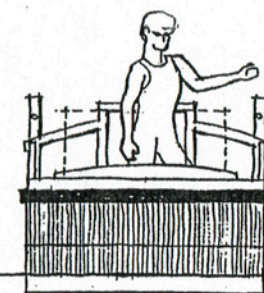
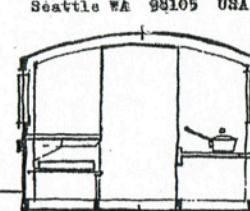
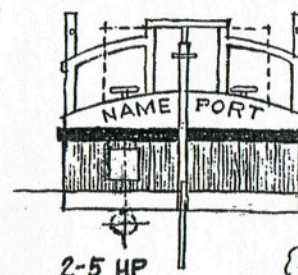
Detailed working drawings and building procedures, on 12-18"x24" sheets, are available for \$150; postpaid.

PHILIP THIEL  
Sea / Land Design  
4720 Seventh Ave. NE  
Seattle WA 98105 USA

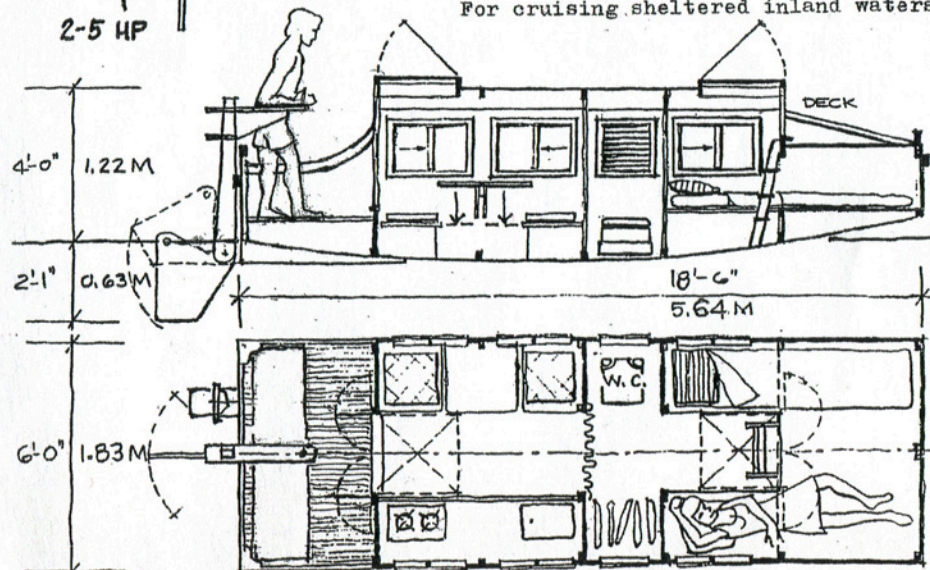


## ESCARGOT III

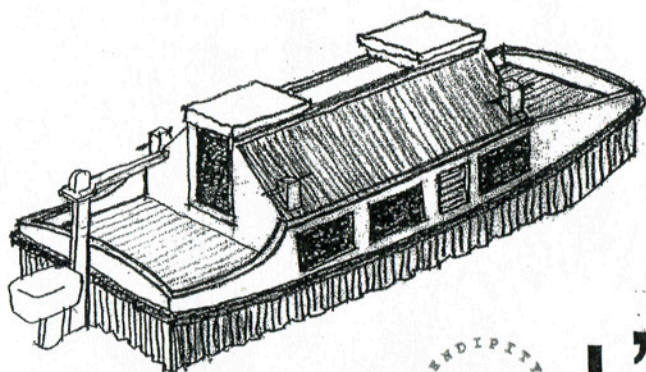
PHILIP THIEL  
Sea / Land Design  
4720 Seventh Ave. NE  
Seattle WA 98105 USA



For cruising sheltered inland waters







# L'ARK

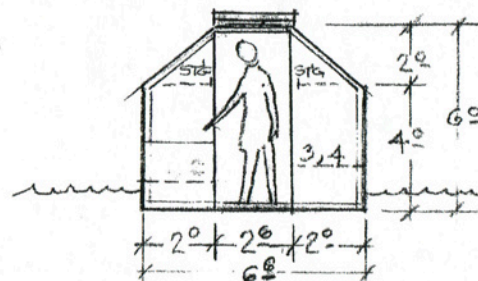
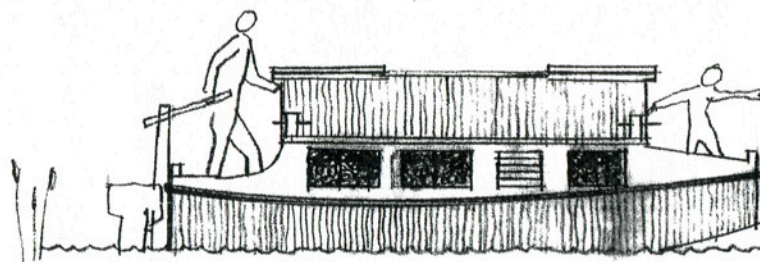
A FOUR-BERTH PLYWOOD CANAL CRUISER

L'ARK is designed for cruising on sheltered inland waterways in a leisurely and relaxed style. Accommodations include four berths arranged in two groups; as for two couples, parents with two children, or two ladies and two gentlemen; along with generous galley and storage space and an enclosed toilet. Open decks fore and aft are for lounging and navigation. Propulsion recommended is a 2 to 5-hp. max. four-cycle outboard, for a sensible 4 mph cruising speed.

The simple punt-like hull and box cabin are constructed of waterproof plywood and standard dressed lumber, with exterior hull seams fiberglass taped and epoxied.

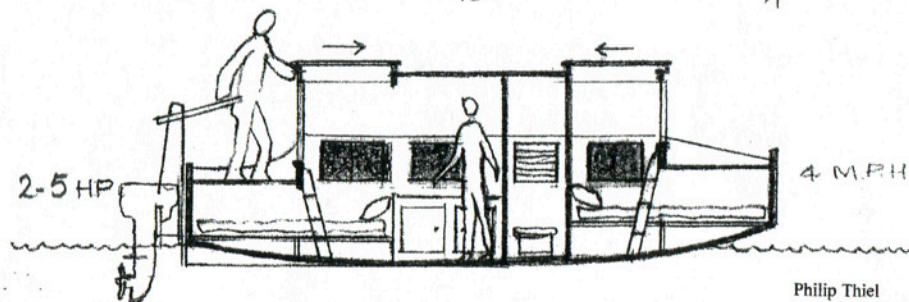
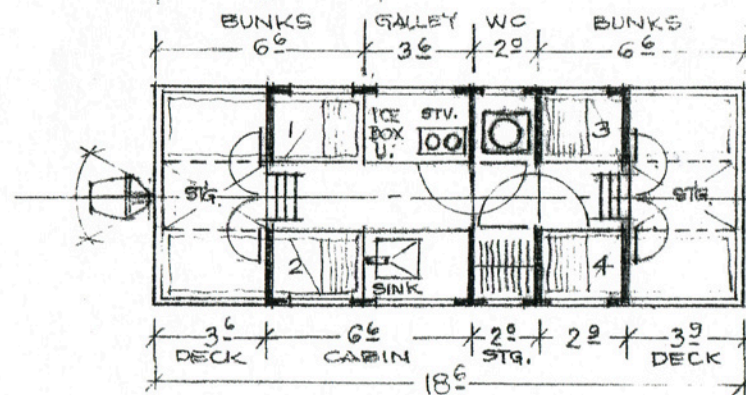
Four sheets of plans, as supplements to Escargot: \$20

Philip Thiel  
4720 7th Ave. NE  
Seattle, WA 98105



# L'ARK

A FOUR-BERTH CANAL CRUISER  
for sheltered inland waters



Philip Thiel  
4720 7th Ave. NE  
Seattle, WA 98105

shop drawings and building procedures on 18"x24" sheets



# DO-IT-YOURSELF OUTBOARD-PROPELLED CANAL-CRUISERS

## JOLI BOAT



CRUISING LIFE IN  
THE SLOW LANE, ON  
SHELTERED INLAND  
WATERWAYS

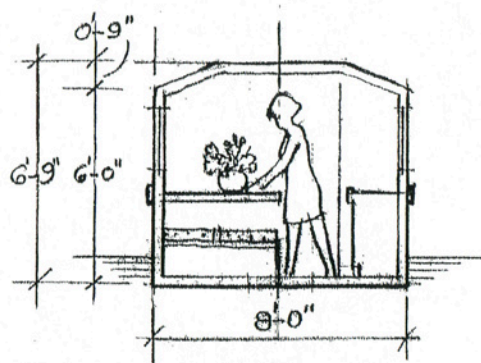
DESIGNED for the advanced amateur boatbuilder the JOLIBOAT features the simplest possible barge-like hull (with great proportions!) built of marine plywood and softwood framing.

ACCOMMODATING four adults under good headroom with generous storage space, the arrangement includes a forward deck, two single berths, a watercloset and storage space, a four-place salon with adjacent galley, a double berth with storage, and an after deck.

PROPULSION is by a ten-hp four-cycle outboard motor, operated from the after deck, for a cruising speed of six mph.

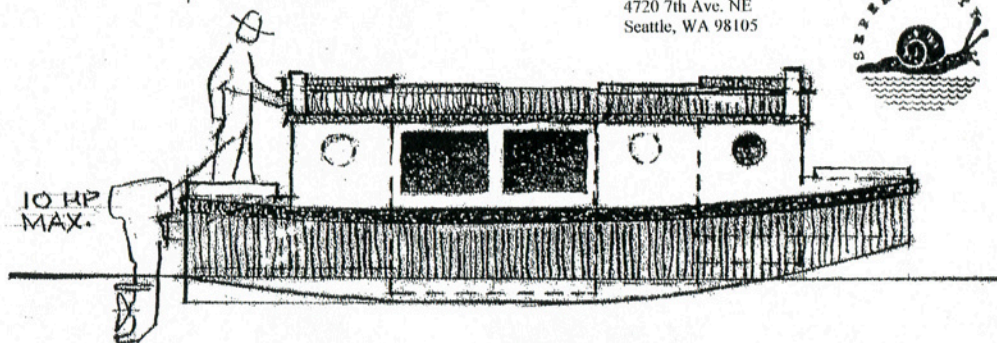
CONSTRUCTION PLANS - eight sheets 18"x24" plus one sheet of detailed building procedures - \$120.00

Philip Thiel  
4720 7th Ave. NE  
Seattle, WA 98105

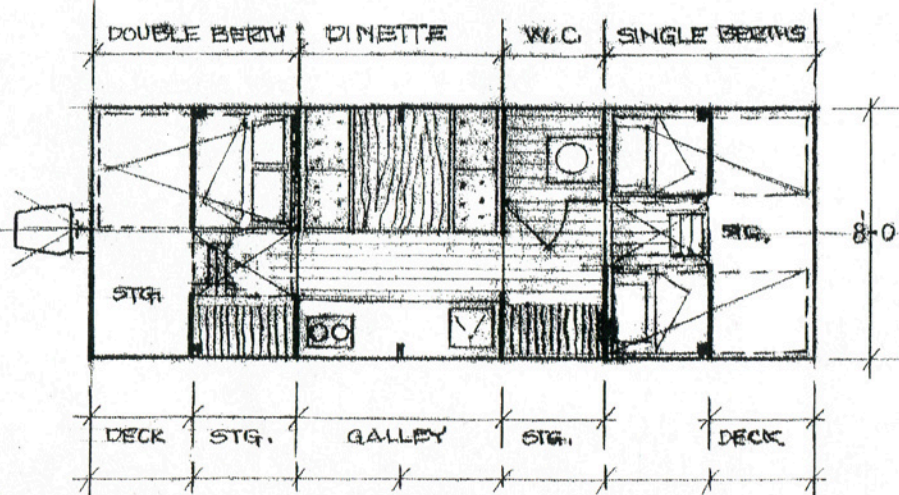


## JOLI BOAT

Philip Thiel  
4720 7th Ave. NE  
Seattle, WA 98105

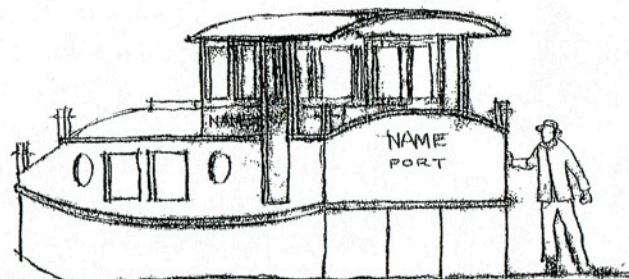


FOR CRUISING SHELTERED INLAND WATERS -



7 @ 3'-3" = 22'-9"





# FRIENDSHIP

for cruising sheltered inland waters

FRIENDSHIP accommodates four boaters in two cabins, plus two more in the convertible dinette, on dimensions of 22'-9" by 8'-0". Built of plywood and stock softwood with a simple box-like barge-type hull there are a minimum of bent panels and beveled cuts to bedevil the advanced amateur builder, while offering authentic work-boat character for canal cruising or exploring sheltered inland waters.

To further simplify matters the five-to-ten horsepower outboard motor could be mounted on a retractable bracket on the stern transom, and if low bridges or high costs were a problem the helm shelter could be replaced with a folding Bimini top.

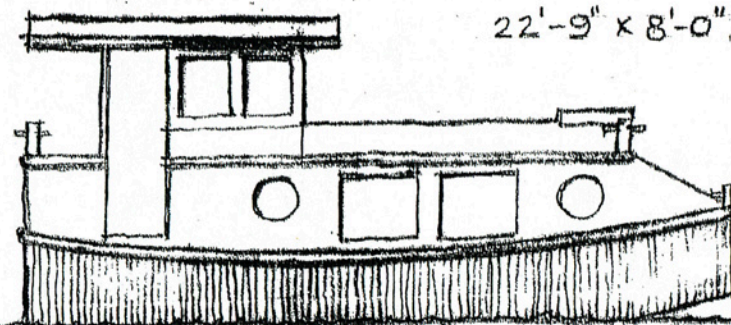
A co-op group of partners based on funding and labor shares could reduce individual costs and increase overall usage....

DETAILED PLANS are now available (14 sheets, 18"x24") for \$190.00.

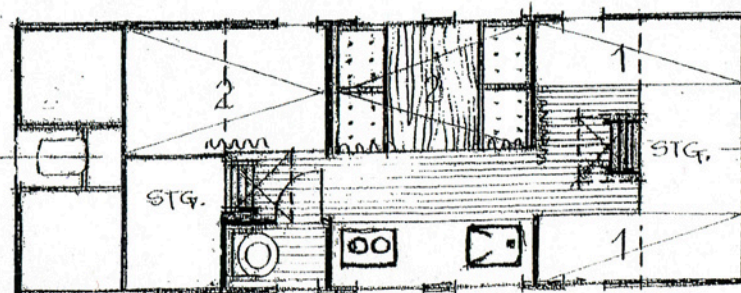
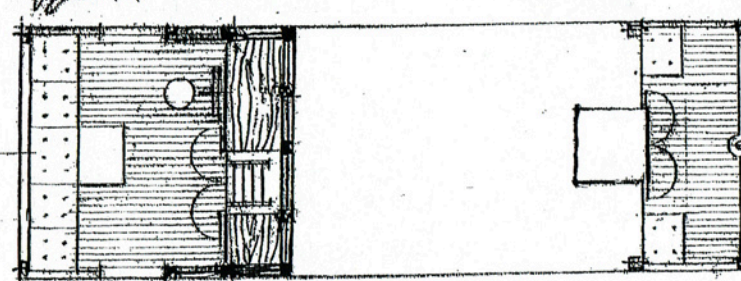
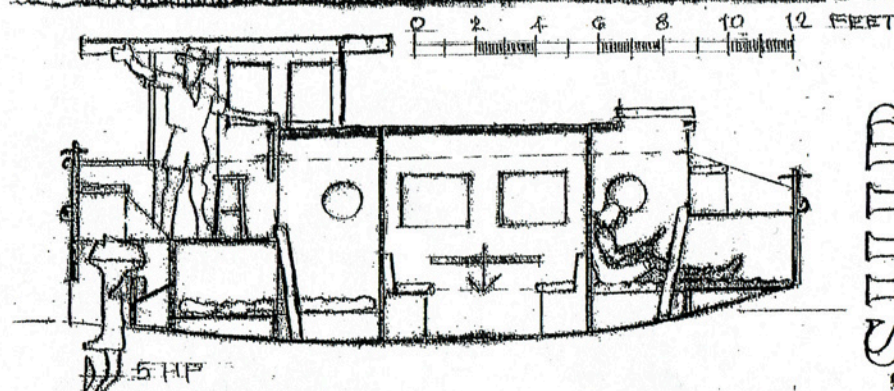
PHILIE THIERR  
Sea / Land Design  
4720 Seventh Ave. NE  
Seattle WA 98105 USA

for canal-cruising or exploring sheltered inland waters

22'-9" x 8'-0"



PHILIE THIERR  
Sea / Land Design  
4720 Seventh Ave. NE  
Seattle WA 98105 USA



FRIENDSHIP

Thiel  
2010